

MYERS® MCI033/MCI050

The Myers MCI033 and MCI050 are rugged cast iron sump pumps featuring a vortex impeller that provides solids-handling capability up to 1/2". Product is available in 1/3 HP and 1/2 HP, 115 Volt single phase 60 Hz. Pump discharge is 1-1/2" NPT. 2-pole float switch for minimum 10" diameter sumps. Manual models also available.

APPLICATIONS

Basement sumps, dewatering, light effluent, water transfer

SPECIFICATIONS

Capacities – MCI033 – 48 GPM (182 LPM)
MCI050 – 62 GPM (235 LPM)

Shut-off Head – 24' (7.3 m)

Operation – On: 9" (229 mm)
Off: 4" (102 mm)

Operation – Automatic or manual

Solids Handling – 1/2" (12.7 mm)

Liquids Handling – Drainage effluent

Continuous Liquid Temperature – 130°F (54°C)

Motor Electrical Data – 1/3 HP, 9.8A; 1/2 HP, 12A; shaded pole with thermal overload protection, 115V, 1Ø, 60Hz, 1550 RPM

Acceptable pH Range – 6-9

Shaft Seal – Carbon and ceramic

Housing/Volute – Heavy cast iron

Volute Base – Fiberglass reinforced polypropylene

Impeller – Fiberglass-reinforced Noryl® with threaded brass insert

Exterior Hardware – Stainless steel

Power Cord – 10' (3 m), 16/3, SJTW-A, SJTW

Discharge, NPT – 1-1/2" (50.8 mm)

Min. Sump Diameter – 10" (25.4 cm)



FEATURES

Easy Fit

2-pole switch design allows for operation in sump diameters of 10" or more

Reliable and Tough

Rugged, oil-cooled motor provides continuous bearing lubrication and maximizes heat dissipation

Extended Service

Lubricated ball bearings and shaft seal for longer service life

Eliminates Failures

Shaded pole motor eliminates failure-prone switches and relays

Motor Protection

Long-life carbon/ceramic seal protects motor against water leakage

Thermal Overload

Heat sensor overload protection with automatic reset when motor cools to safe operating temperature

No Drilling Required

Anti-airlock hole in base reduces added labor

Easy Serviceability

Pump, intake screen volute base, switch and power cord are serviceable

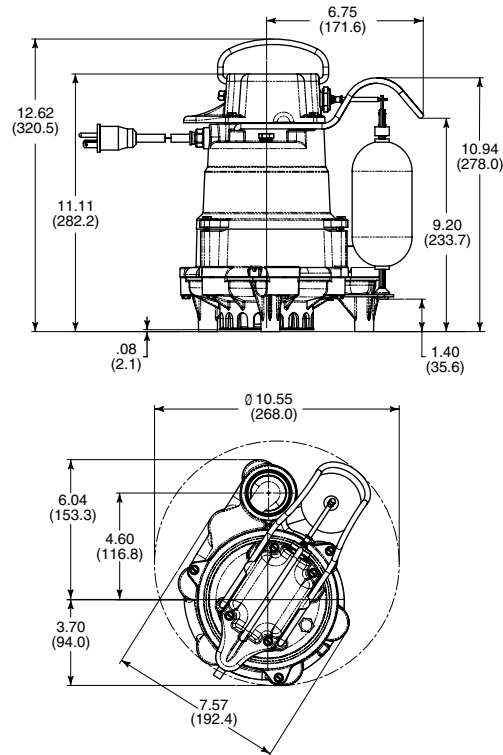
ORDERING INFORMATION

Catalog Number	HP	Volts	Phase/Cycles	Amps	Discharge Size	Switch Type	Cord Length	Approx. Wt. Lbs.
MCI033	1/3	115	1/60	9.8	1-1/2"	2-pole	10', 20', 30'	24
MCI050	1/2	115	1/60	12	1-1/2"	2-pole	10', 20', 30'	26
MCI033M	1/3	115	1/60	9.8	1-1/2"	Manual	10', 20', 30'	22
MCI050M	1/2	115	1/60	12	1-1/2"	Manual	10', 20', 30'	24

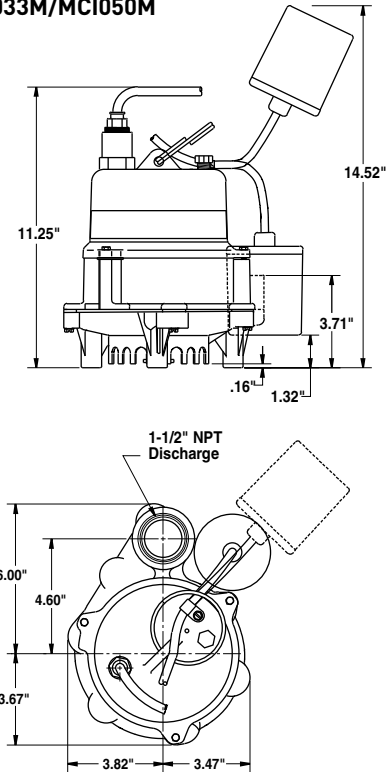
MYERS® MCI033/MCI050

DIMENSIONS

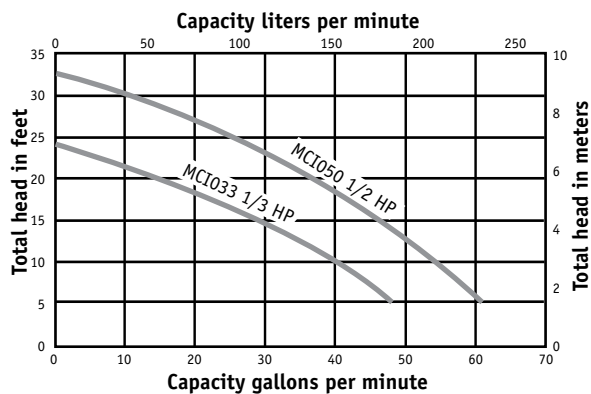
MCI033/MCI050



MCI033M/MCI050M



PUMP PERFORMANCE



USA
293 WRIGHT STREET, DELAVAN, WI 53115 WWW.FEMYERS.COM
PH: 888-987-8677 ORDERS FAX: 800-426-9446

CANADA
490 PINEBUSH ROAD, UNIT 4, CAMBRIDGE, ONTARIO N1T 0A5
PH: 800-363-7867 ORDERS FAX: 888-606-5484

Because we are continuously improving our products and services, Pentair reserves the right to change specifications without prior notice.